

BILLET

OPAL INTEGRAL - WET LOCATION

bold
lighting



The Billet family of products allows you to achieve uniformity throughout indoor and outdoor spaces while maintaining the same optical performance, light consistency, and overall aesthetics.

The Billet Opal delivers bold vertical and horizontal illumination perfect for ambient lighting and washing. The Billet confidently delivers a flawless light distribution and a beautifully finished product.

CONSTRUCTION

Product Type : Linear
Body Material : Extruded Aluminum
Body Finish : Black / Grey / White
 Custom RAL

IP Rating : IP67 Inground

IP66 Ceiling Recessed

IK Rating : IK10

Drive Over Rating : Billet Inground is designed to bear static loads up to 2500 lbs. from vehicles with pneumatic tires. This product is not intended to be used for traffic lanes. Chicago plenum rated

INSTALLATION

Environment : Wet Location

Mounting : Inground / Ceiling Recessed (Trim & Trimless) / Wall Recessed (Trim & Trimless) / Wall Mounted Surface Mounted / Pendant

OPTICS

Optical Distribution : Lambertian

Glare Control : UGR<19

LIGHT SOURCE

Direct Light Source : Mid-Power LEDs

Luminous Output : from 975lm/m to 4185lm/m (Delivered)

Light Source CCT : 2700K / 3000K / 3500K 4000K / Tunable White (2700K-5000K)

Color Rendering Index : Ra90

Lifetime : L80 B10 @ 70,000 Hrs

ELECTRICAL

Input Voltage : 220-240V / UNV 120-277V - 50Hz/60Hz

Load : 16W/m to 66W/m

Output Type : Constant Current

Driver Type : Integral

Dimming : 0-10V / DALI / ELV / DMX

Lutron Hi-Lume

Code Compliance : ETL / CSA / CE

Series	Mounting	Nominal Length ¹
BOO	R Recessed with Trim	12 300 mm
	T Recessed Trimless*	24 600 mm
	S Surface Mounted	36 900 mm
	P Pendant	48 1200 mm
	I Inground*	60 1500 mm
	W Wall Mounted	XX Custom mm

*For Inground "I" and Recessed Trimless "T" mountings, the housings will show on the price quote and order as a separate item to allow us to ship them ahead of the fixtures if required by the contractor.

For custom lengths and shapes, consult factory.
 For exact lengths refer to dimensions table.

Code example: **BOO** - P12W - L2B - W - L927 - 0

Body Finish	Output	Voltage	Dimming	Baffles	Beam Angle	CRI	Color Temp	Emergency
B Black	L² 1030lm/m (16W)	2 220-240V	A No Dimming	W Flat White	L Opal	9 +90	27 2700K	0 No
G Grey	M² 2075lm/m (33W)	U⁴ Universal 120 to 277V	B 0-10V to 1%	B Flat Black			30 3000K	
W White	H² 3115lm/m (49W)		D DALI to 1%	N Black Nickel			35 3500K	
X Custom RAL	V² 3985lm/m (66W)		E ELV Dimming	C Specular Chrome			40 4000K	
	U³ 2180lm/m (33W)		F DMX	E Diffuse Gold			TW 2700K - 5000K	
	A³ 4185lm/m (66W)		G⁵ LUTRON	X Custom				

Notes:
¹ 150 mm length increments available as a modification.
² Denotes output at 3000K, unless otherwise noted.
³ Denotes output specific to Tunable White at full on.
⁴ Not applicable for ELV dimming.
⁵ Hi-lume, Vive, and Athena compatible.

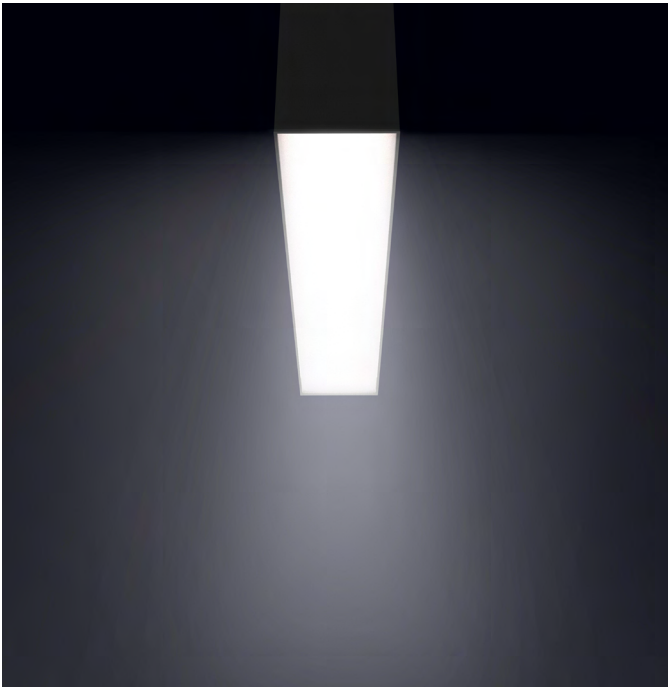
Consult factory for lead-times.
 Consult factory for systems using multiple optics and mounting configurations.



Bold Lighting
 4710 Ecton Dr., Marietta, GA 30066, USA
 info@boldlighting.us www.boldlighting.us t: +1-678-903-4061

OPTICAL FLEXIBILITY

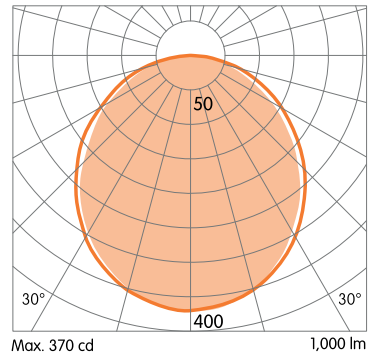
LAMBERTIAN DISTRIBUTION



Lambertian distributions are optimal for general lighting, providing a soft and uniform illumination on both horizontal and vertical surfaces.

Billet's opal lens is ideal for commercial, retail, institutional, and any other environment where comfortable and even illumination is needed.

120° Beam Angle (Lambertian)

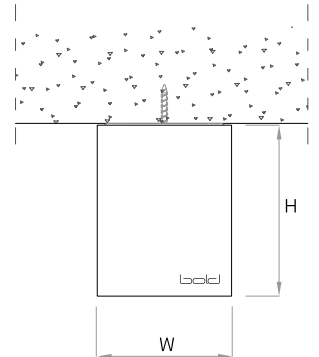


MOUNTING FLEXIBILITY
Per Millimeter

SURFACE MOUNTED




Actual (mm)
L= 622 | 922 | 1222 | 1522 |
Continuous runs
W= 72
H= 91

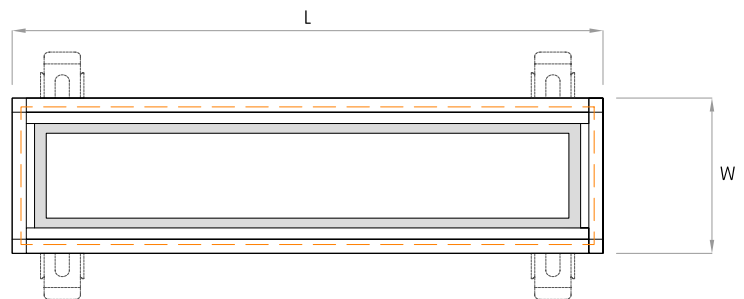
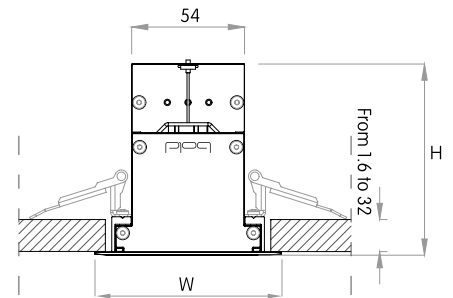


RECESSED WITH TRIM



 (L-20 x W-20)


Actual (mm)
L= 334 | 634 | 934 | 1234 |
1534 | Continuous runs
W= 80
H= 91



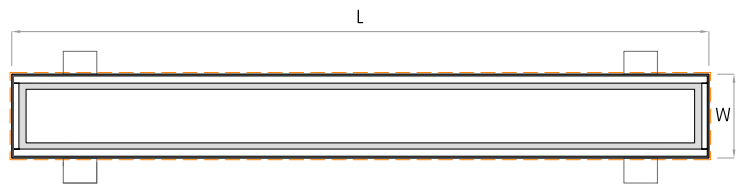
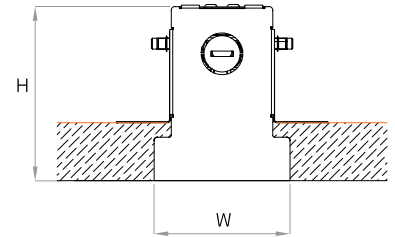
MOUNTING FLEXIBILITY

RECESSED TRIMLESS

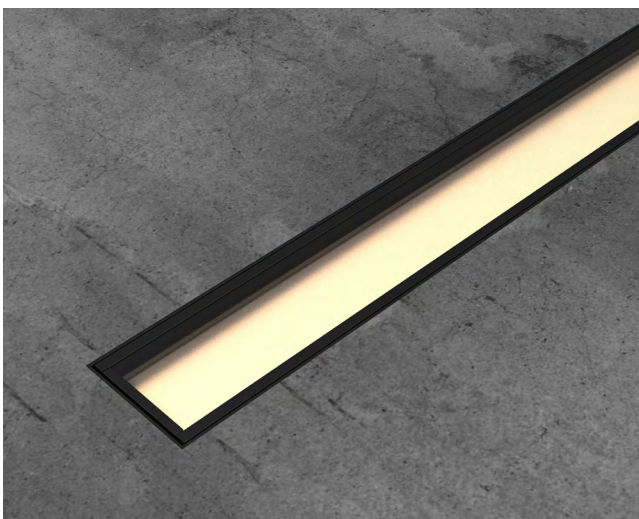


 (L+1.6 x W+1.6)

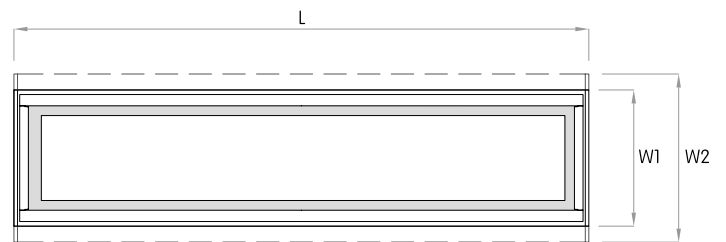
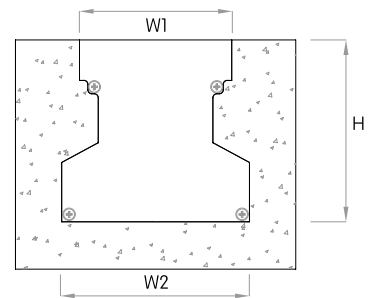
Actual (mm)
 L= 624 | 924 | 1224 | 1524 |
 Continuous runs
 W= 75
 H= 97



INGROUND



Actual (mm)
 L= 325 | 625 | 925 | 1225 |
 1525 | Continuous runs
 W1= 77 | W2= 95
 H= 92

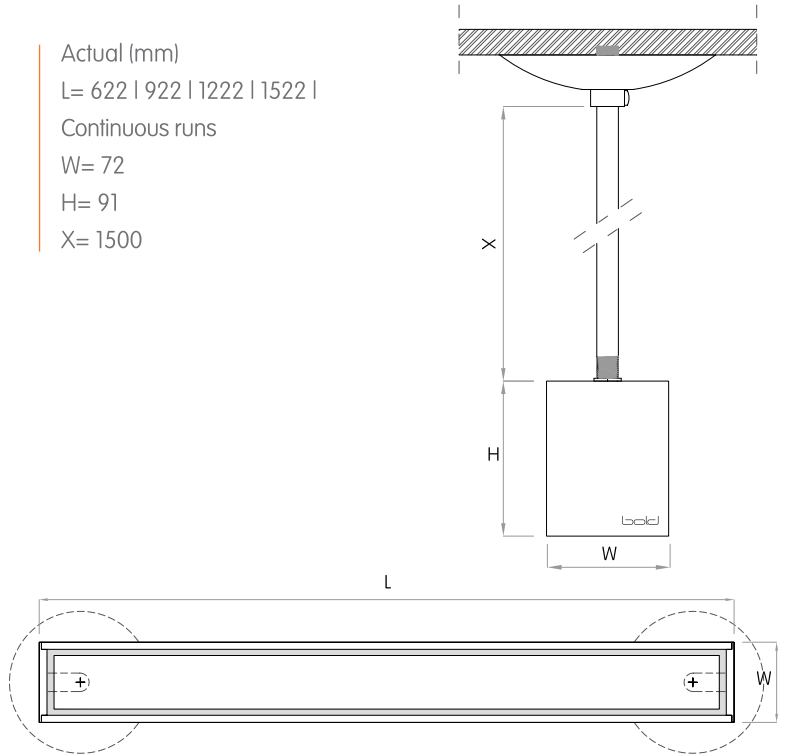


MOUNTING FLEXIBILITY

PENDANT



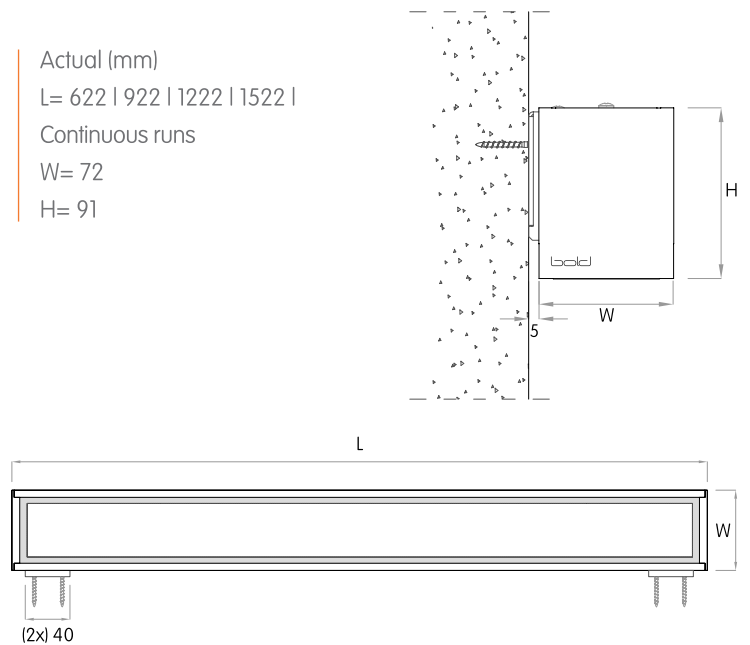
Actual (mm)
L= 622 | 922 | 1222 | 1522 |
Continuous runs
W= 72
H= 91
X= 1500



WALL MOUNTED



Actual (mm)
L= 622 | 922 | 1222 | 1522 |
Continuous runs
W= 72
H= 91



DELIVERED LUMEN OUTPUT

Per Meter

Output Watts CRI +90

STATIC-WHITE		2700K	3000K	3500K	4000K
L	16W	975 lm	1030 lm	1065 lm	1085 lm
M	33W	1960 lm	2075 lm	2140 lm	2180 lm
H	49W	2945 lm	3115 lm	3210 lm	3270 lm
V	66W	3765 lm	3985 lm	4105 lm	4185 lm

TUNABLE WHITE 2700K-5000K		2700K	5000K
U	33W	1960 lm	2180 lm
A	66W	3765 lm	4185 lm

DIMENSIONS TABLE

		12"		24"		36"		48"		60"				
		Height		Width		Actual Length								
Surface Mounted	mm	inch	mm	inch	mm	inch	mm	inch	mm	inch	mm	inch		
		91	3 9/16	72	2 13/16			622	24 1/2	922	36 5/16	1222	48 1/8	1522
Recessed with Trim	91	3 9/16	88	3 7/16	335	13 3/16	634	25	934	36 13/16	1234	48 5/8	1534	60 7/16
Recessed Trimless	97	3 13/16	75	2 15/16			624	24 5/8	924	36 3/8	1224	48 1/4	1524	60
Pendant	91	3 9/16	72	2 13/16			622	24 1/2	922	36 5/16	1222	48 1/8	1522	59 15/16
Inground (with housing)	92	3 5/8	95	3 3/4	325	12 13/16	625	24 5/8	925	36 7/16	1225	48 1/4	1525	60
Wall Mounted	91	3 9/16	72	2 13/16			622	24 1/2	922	36 5/16	1222	48 1/8	1522	59 15/16

