

# BILLET

OPAL REMOTE - WET LOCATION

**bold**  
lighting



The Billet family of products allows you to achieve uniformity throughout indoor and outdoor spaces while maintaining the same optical performance, light consistency, and overall aesthetics.

The Billet Opal delivers bold vertical and horizontal illumination perfect for ambient lighting and washing. The Billet confidently delivers a flawless light distribution and a beautifully finished product.

## CONSTRUCTION

**Product Type :** Linear  
**Body Material :** Extruded Aluminum  
**Body Finish :** Black / Grey / White  
Custom RAL

**IP Rating :** IP67 Inground

IP66 Ceiling Recessed

**IK Rating :** IK10

**Drive Over Rating :** Billet Inground is designed to bear static loads up to 2500 lbs. from vehicles with pneumatic tires. This product is not intended to be used for traffic lanes. Chicago plenum rated

## INSTALLATION

**Environment :** Wet Location

**Mounting :** Inground / Ceiling Recessed (Trim & Trimless) / Wall Recessed (Trim & Trimless) / Wall Mounted Surface Mounted / Pendant

## OPTICS

**Optical Distribution :** Lambertian

**Glare Control :** UGR<19

## LIGHT SOURCE

**Direct Light Source :** Mid-Power LEDs

**Luminous Output :** from 975lm/m to 4185lm/m (Delivered)

**Light Source CCT :** 2700K / 3000K / 3500K 4000K / Tunable White (2700K-5000K)

**Color Rendering Index :** Ra90

**Lifetime :** L80 B10 @ 70,000 Hrs

## ELECTRICAL

**Input Voltage :** 220-240V / UNV 120-277V - 50Hz/60Hz

**Load :** 16W/m to 66W/m

**Output Type :** Constant Voltage

**Driver Type :** Remote

**Dimming :** 0-10V / DALI / ELV / DMX

Lutron Hi-Lume

**Code Compliance :** ETL / CSA / CE

Series	Mounting	Nominal Length <sup>1</sup>
<b>BOO</b>	<b>R</b> Recessed with Trim	<b>12</b> 300 mm
	<b>T</b> Recessed Trimless*	<b>24</b> 600 mm
	<b>S</b> Surface Mounted	<b>36</b> 900 mm
	<b>P</b> Pendant	<b>48</b> 1200 mm
	<b>I</b> Inground*	<b>60</b> 1500 mm
	<b>W</b> Wall Mounted	<b>XX</b> Custom mm

\*For Inground "I" and Recessed Trimless "T" mountings, the housings will show on the price quote and order as a separate item to allow us to ship them ahead of the fixtures if required by the contractor.

For custom lengths and shapes, consult factory.  
For exact lengths refer to dimensions table.

Code example: **BOO** - P12W - L2H - W - L927 - 0

Body Finish	Output	Voltage	Dimming	Baffles	Beam Angle	CRI	Color Temp	Emergency
<b>B</b> Black	<b>L<sup>2</sup></b> 1030lm/m (16W)	<b>2</b> 220-240V	<b>H</b> Non Dim	<b>W</b> Flat White	<b>L</b> Opal	<b>9</b> +90	<b>27</b> 2700K	<b>0</b> No
<b>G</b> Grey	<b>M<sup>2</sup></b> 2075lm/m (33W)	<b>U<sup>4</sup></b> Universal 120 to 277V	<b>I</b> 0-10V to 1%	<b>B</b> Flat Black			<b>30</b> 3000K	<b>9</b> 90 mins
<b>W</b> White	<b>H<sup>2</sup></b> 3115lm/m (49W)		<b>K</b> Dali to 1%	<b>N</b> Black Nickel			<b>35</b> 3500K	
<b>X</b> Custom RAL	<b>V<sup>2</sup></b> 3985lm/m (66W)		<b>L</b> ELV	<b>C</b> Specular Chrome			<b>40</b> 4000K	
	<b>U<sup>3</sup></b> 2180lm/m (33W)		<b>M</b> DMX	<b>E</b> Diffuse Gold			<b>TW</b> 2700K - 5000K	
	<b>A<sup>3</sup></b> 4185lm/m (66W)		<b>N<sup>5</sup></b> LUTRON	<b>X</b> Custom				

**Notes:**

<sup>1</sup> 150 mm length increments available as a modification.

<sup>2</sup> Denotes output at 3000K, unless otherwise noted.

<sup>3</sup> Denotes output specific to Tunable White at full on.

<sup>4</sup> Not applicable for ELV dimming.

<sup>5</sup> Hi-lume, Vive, and Athena compatible.

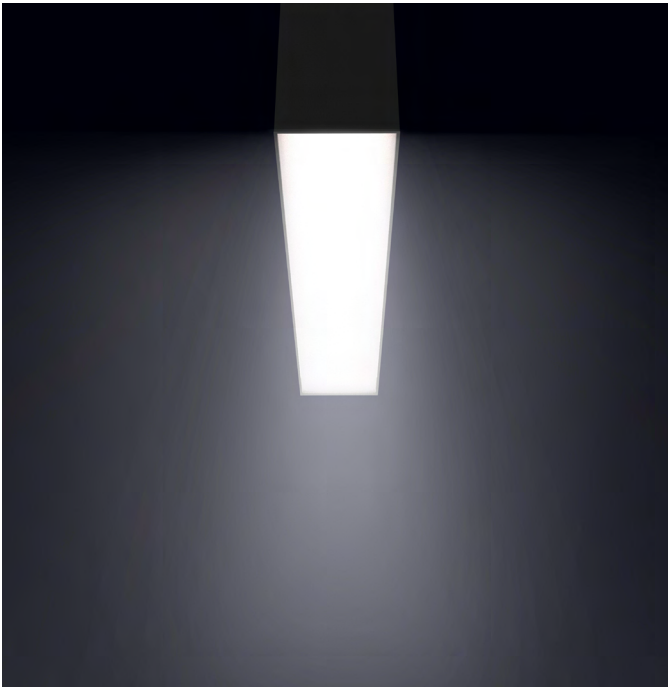
Consult factory for lead-times.  
Consult factory for systems using multiple optics and mounting configurations.



**Bold Lighting**  
4710 Ecton Dr., Marietta, GA 30066, USA  
info@boldlighting.us www.boldlighting.us t: +1-678-903-4061

## OPTICAL FLEXIBILITY

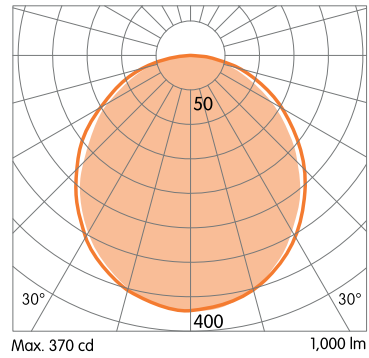
### LAMBERTIAN DISTRIBUTION



Lambertian distributions are optimal for general lighting, providing a soft and uniform illumination on both horizontal and vertical surfaces.

Billet's opal lens is ideal for commercial, retail, institutional, and any other environment where comfortable and even illumination is needed.

120° Beam Angle (Lambertian)

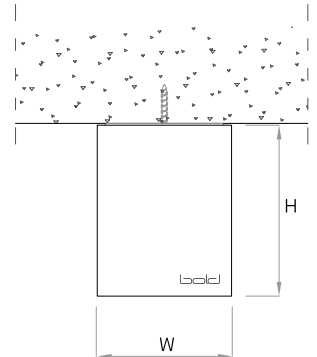


**MOUNTING FLEXIBILITY**  
Per Millimeter

**SURFACE MOUNTED**




Actual (mm)  
L= 622 | 922 | 1222 | 1522 |  
Continuous runs  
W= 72  
H= 91

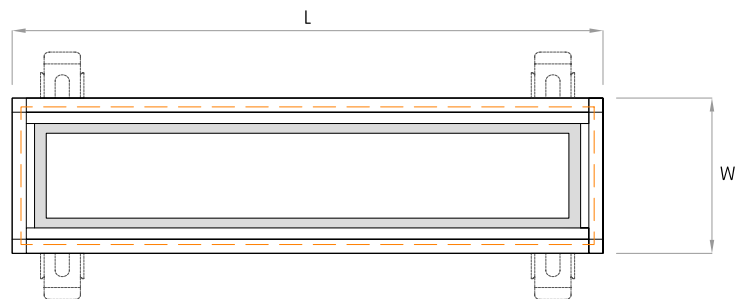
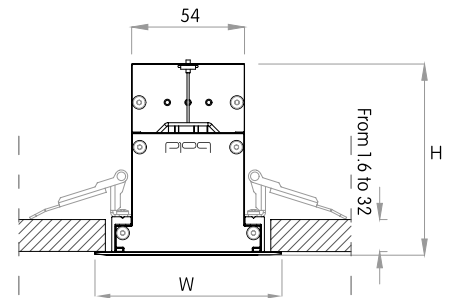


**RECESSED WITH TRIM**



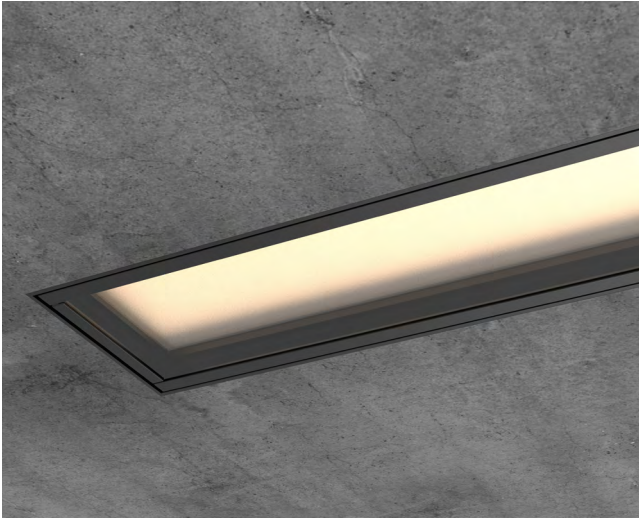
 (L-20 x W-20)


Actual (mm)  
L= 334 | 634 | 934 | 1234 |  
1534 | Continuous runs  
W= 80  
H= 91



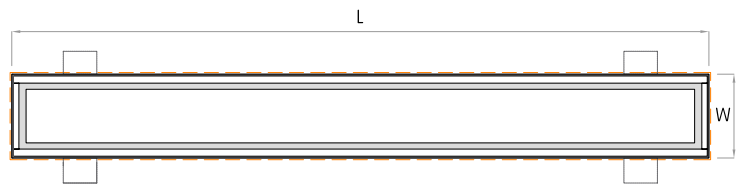
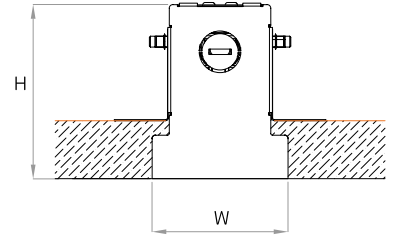
# MOUNTING FLEXIBILITY

## RECESSED TRIMLESS

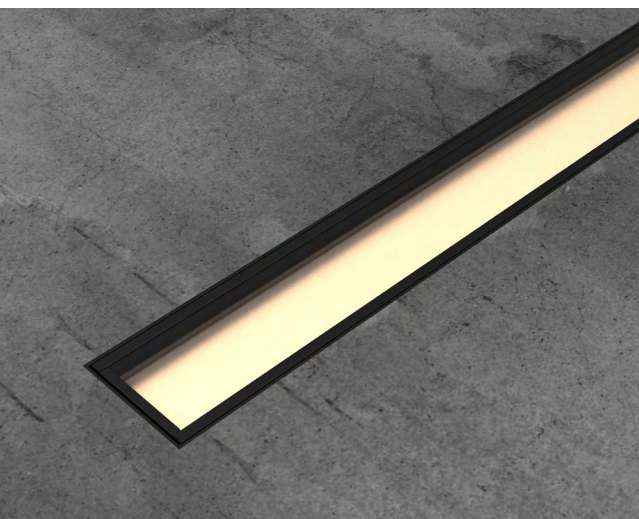


 (L+1.6 x W+1.6)

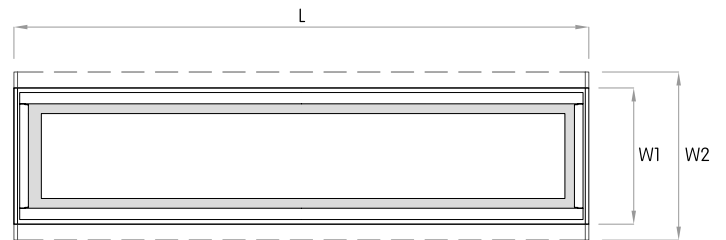
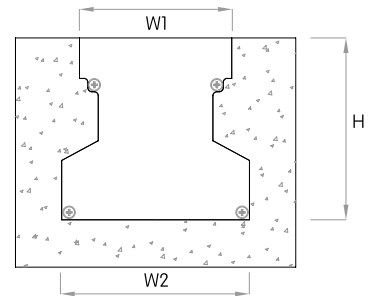
Actual (mm)  
 L= 624 | 924 | 1224 | 1524 |  
 Continuous runs  
 W= 75  
 H= 97



## INGROUND



Actual (mm)  
 L= 325 | 625 | 925 | 1225 |  
 1525 | Continuous runs  
 W1= 77 | W2= 95  
 H= 92

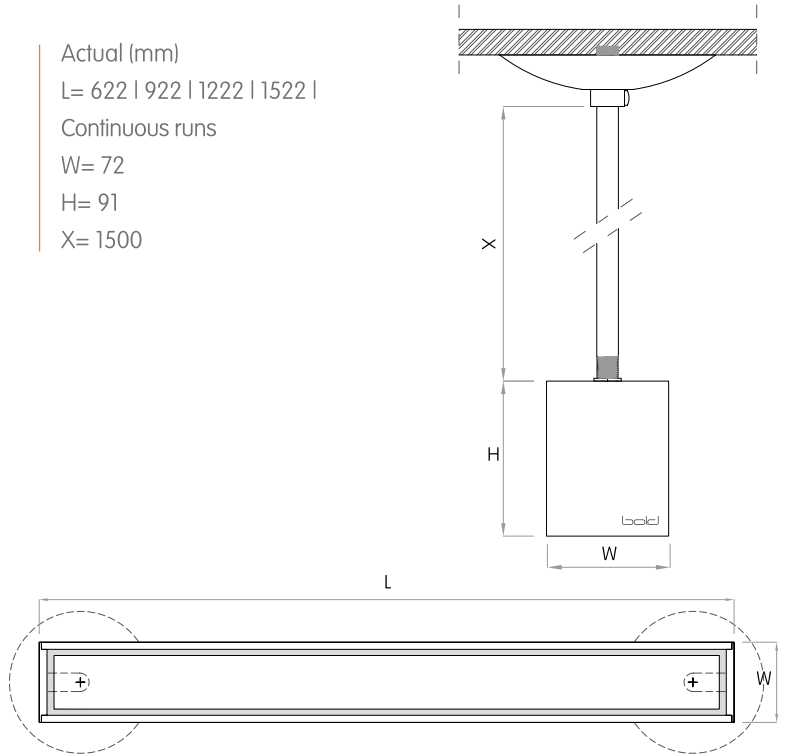


# MOUNTING FLEXIBILITY

## PENDANT



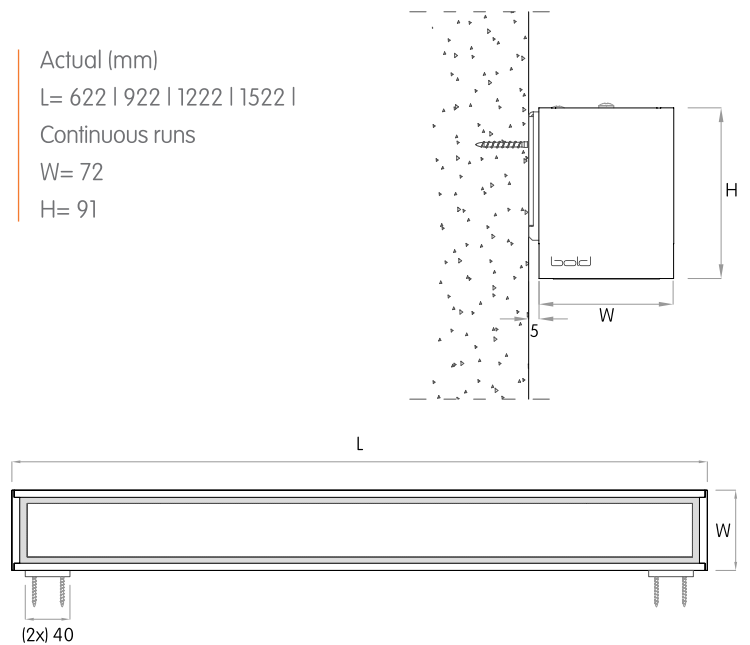
Actual (mm)  
L= 622 | 922 | 1222 | 1522 |  
Continuous runs  
W= 72  
H= 91  
X= 1500



## WALL MOUNTED



Actual (mm)  
L= 622 | 922 | 1222 | 1522 |  
Continuous runs  
W= 72  
H= 91





## DELIVERED LUMEN OUTPUT

Per Meter

Output Watts CRI +90

STATIC-WHITE		2700K	3000K	3500K	4000K
L	16W	975 lm	1030 lm	1065 lm	1085 lm
M	33W	1960 lm	2075 lm	2140 lm	2180 lm
H	49W	2945 lm	3115 lm	3210 lm	3270 lm
V	66W	3765 lm	3985 lm	4105 lm	4185 lm

TUNABLE WHITE 2700K-5000K		2700K	5000K
U	33W	1960 lm	2180 lm
A	66W	3765 lm	4185 lm

## DIMENSIONS TABLE

		12"		24"		36"		48"		60"				
		Height		Width		Actual Length								
Surface Mounted	mm	inch	mm	inch	mm	inch	mm	inch	mm	inch	mm	inch		
		91	3 9/16	72	2 13/16			622	24 1/2	922	36 5/16	1222	48 1/8	1522
Recessed with Trim	91	3 9/16	88	3 7/16	335	13 3/16	634	25	934	36 13/16	1234	48 5/8	1534	60 7/16
Recessed Trimless	97	3 13/16	75	2 15/16			624	24 5/8	924	36 3/8	1224	48 1/4	1524	60
Pendant	91	3 9/16	72	2 13/16			622	24 1/2	922	36 5/16	1222	48 1/8	1522	59 15/16
Inground (with housing)	92	3 5/8	95	3 3/4	325	12 13/16	625	24 5/8	925	36 7/16	1225	48 1/4	1525	60
Wall Mounted	91	3 9/16	72	2 13/16			622	24 1/2	922	36 5/16	1222	48 1/8	1522	59 15/16

